

PREPARING FABRIC AND PATTERNS TO BE CUT



1. PRE-SHRINK

- ▶ **Fabrics with high cotton content will shrink after its first laundering.**
- ▶ **Wash and dry the fabric as you normally would to pre-shrink the fabric before cutting out any pattern pieces.**



2. PRESS AND STRAIGHTEN GRAIN

- ▶ **After the fabric is dry, you will need to refold, press and straighten the grainlines.**
- ▶ **Press the fabric WRONG sides together with SELVAGES touching.**



3. CHECK FOR DIRECTIONAL FABRICS

- ▶ **Some fabrics are considered one-way, or directional, because of the pattern.**
- ▶ **All pattern pieces must be placed going in the same direction.**

Directional Fabric



Non-Directional Fabric



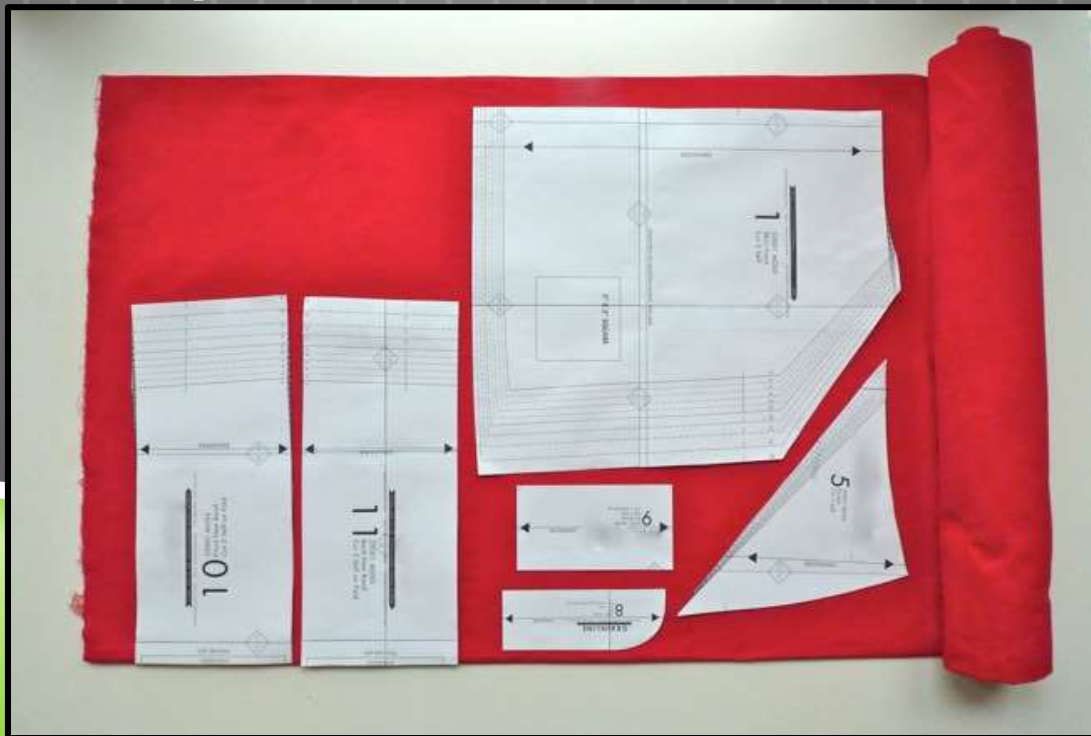
4. FABRICS WITH A NAP

- ▶ **Other directional fabrics include those with a *nap*. All pattern pieces must be placed with the upper edges of the pattern pieces going in the same direction.**
- ▶ **Nap: soft and fuzzy surface on fabric created by raised, short fiber ends (Ex: velvet, corduroy, etc.)**



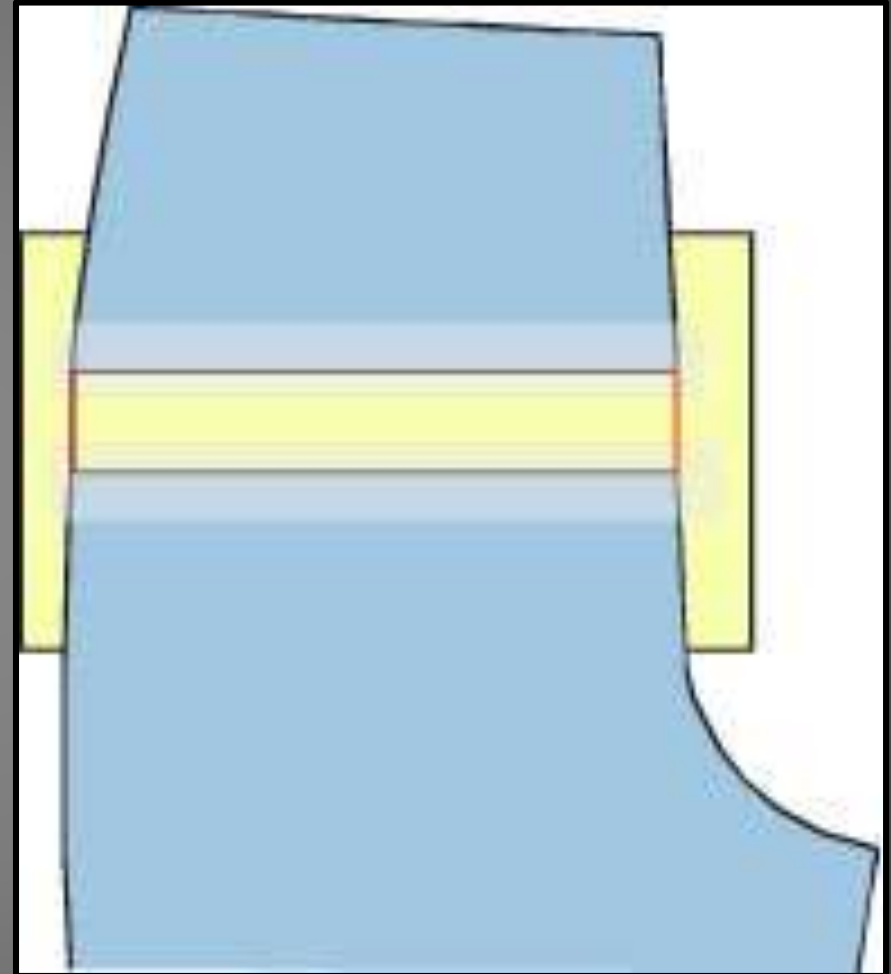
5. LAYING OUT PATTERN PIECES

- ▶ Place pattern pieces on fabric according to the grainlines.
- ▶ Use the pattern layouts from the pattern guide sheet. They provide layouts for the most economical use of the fabric.
- ▶ Pay close attention to pattern symbols, like place-on-fold, and how many pieces of fabric should be cut from each pattern piece.



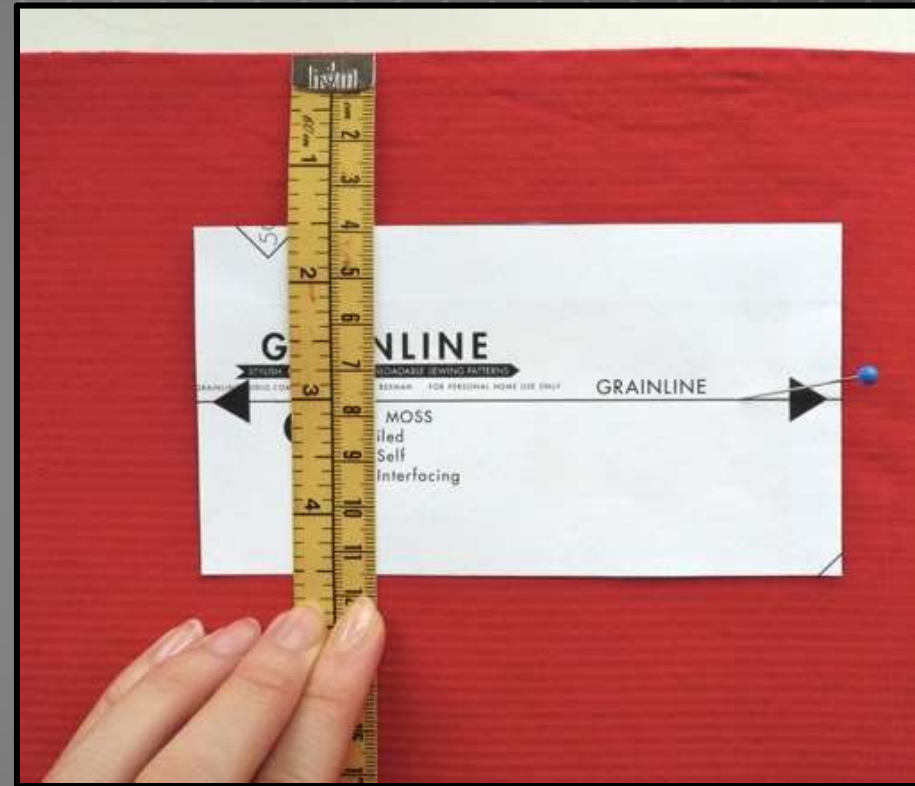
6. MAKE PATTERN ALTERATIONS

- ▶ **Use pattern adjustment lines to lengthen or shorten pattern pieces based on body measurements.**



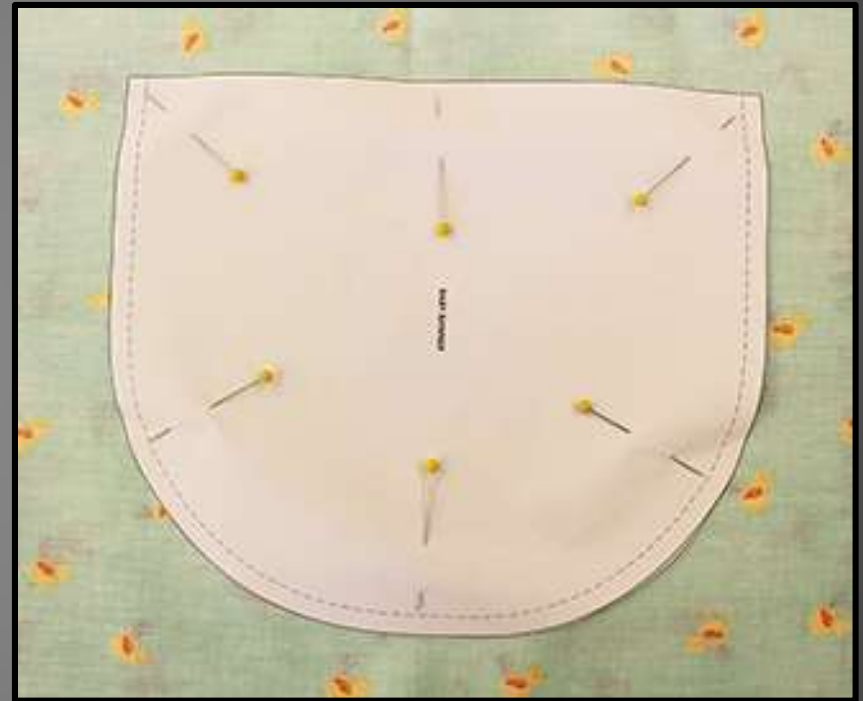
7. CHECK THE STRAIGHT OF GRAIN

- ▶ Pin one end of the grainline and measure the distance from the pinned side of the grainline to the selvage.
- ▶ Then measure the other end of the grainline to the selvage.
- ▶ The two measurements should be the same. Pin the pattern in place.



8. PINNING DOWN PATTERN PIECES

- ▶ **When pinning pattern pieces to fabric in order to cut them out be sure to pin **INSIDE** the cutting line.**
- ▶ **Don't use too many pins. Space them out enough to prevent bunching, but close enough to keep the pattern in place.**



9. DOUBLE CHECK!

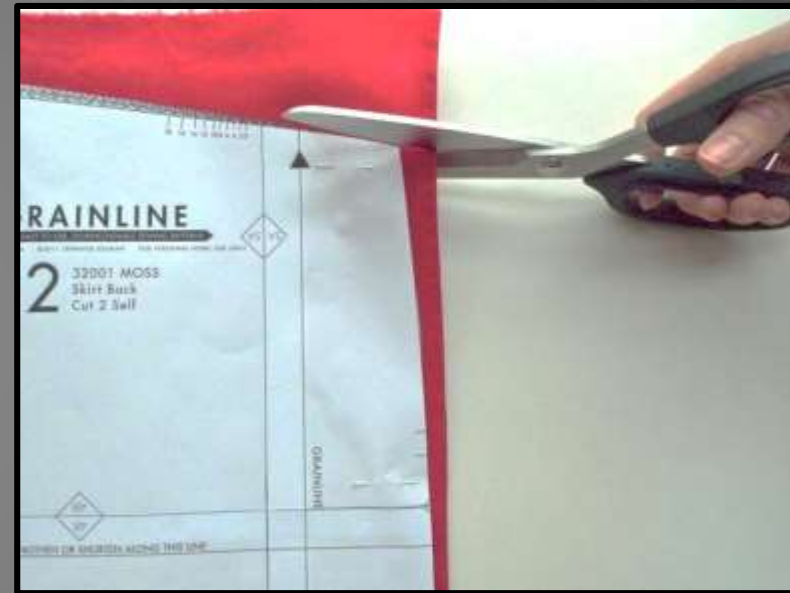
- ▶ **Double check your pinning and grainlines before you begin cutting.**
- ▶ **Measure twice, cut once!**



**KEEP
CALM
AND
DOUBLE
CHECK**

10. CUTTING OUT PATTERN PIECES

- ▶ **Use the proper cutting equipment. Sharp fabric shears are best for cutting around pattern pieces.**
- ▶ **Keep the fabric as flat as possible when cutting around pieces. Do not lift fabric in the air. The shears should slide along the table.**
- ▶ **Remember to cut OUT and AROUND notches!**



11. MARKING THE FABRIC

- ▶ **Transfer any pattern markings and symbols to the fabric AFTER the pattern pieces have been cut out, but BEFORE the patterns are unpinned and removed.**



12. PINNING FABRIC BEFORE SEWING

- ▶ **When pinning fabric together in order to sew them, pin *perpendicular* to where the seam line will be.**
- ▶ **The pinhead should be sticking out away from the fabric by about 1/4''-1/2'' for easy removal while sewing.**

