

Clothing I

Monster Doll Skills Packet

This Belongs To:

Name

Class Period

Monster Doll Skills Packet

This packet will help teach you basic sewing skills and construction techniques. It will also help you to learn how to read and follow a pattern. When you are finished with this project, not only will you have learned some critical sewing skills, but you will also have a custom made and unique pillow. Below are some of the sewing skills and techniques that need to be checked off as you complete your pillow:

- 1. Measuring and Seam Allowances**
- 2. Buttonhole and Casing Measuring**
- 3. Pattern Drafting**
- 4. Working with Felt and Fusibles**
- 5. Patch Pocket**
- 6. Buttons and Buttonholes**
- 7. Pivoting and Backstitching**
- 8. Clipping and Notching**
- 9. Slipstitching**

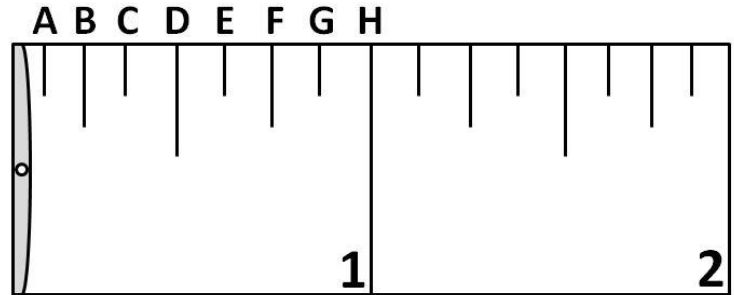
Skills 1-3 must be checked off by the teacher before moving forward in the skills packet. All other skills do not need to be checked off by the teacher, but must still be completed to receive full credit. It may be easiest to complete skills 4-9 in the order given in this packet, but they can be completed in any order. Good luck and have fun!



1. Measuring and Seam Allowances

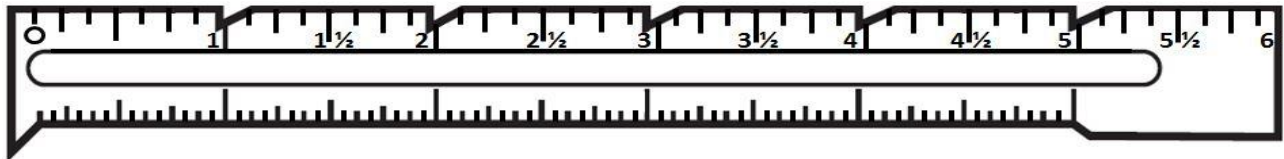
1. Identify the correct measurements on the ruler below:
(Remember to simplify the fractions to lowest terms.)

- | | |
|-------------|-------------|
| A: _____ in | E: _____ in |
| B: _____ in | F: _____ in |
| C: _____ in | G: _____ in |
| D: _____ in | H: _____ in |

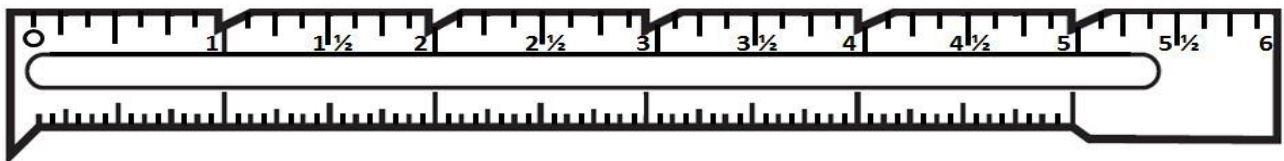


2. Using a RED colored pencil, draw in the slider on the specified measurement for each seam gauge below:

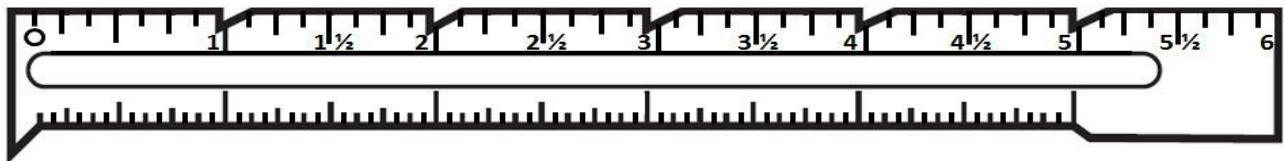
Draw the slider at $1/4$ " on the seam gauge.



Draw the slider at $5/8$ " on the seam gauge.

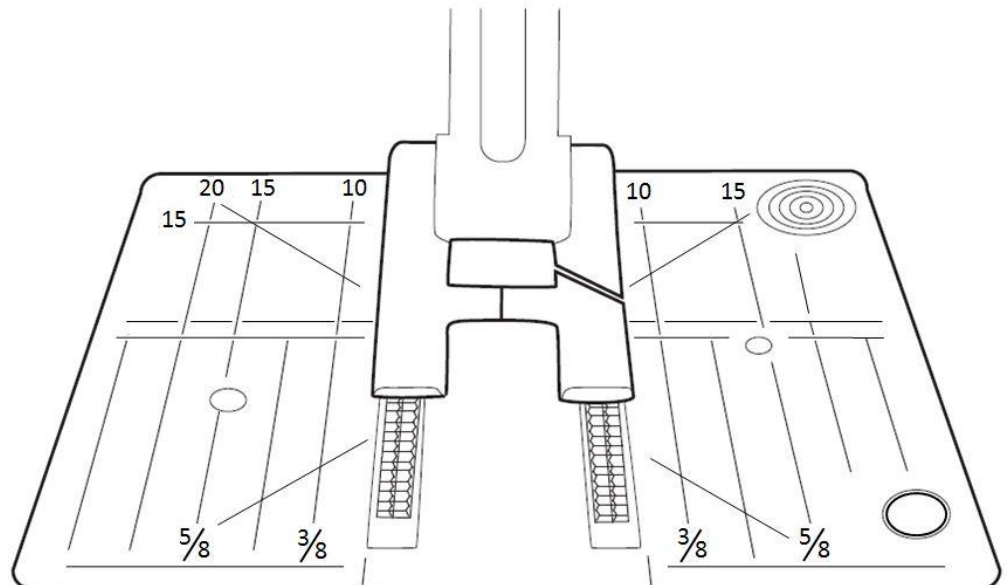


Draw the slider at $3 \frac{1}{8}$ " on the seam gauge.



3. Draw a colored line along the guideline on the stitch plate for the following measurements:

- $1/8$ " = Brown
- $1/4$ " = Purple
- $1/2$ " = Red
- $3/4$ " = Blue
- $7/8$ " = Green
- 1" = Orange



2. Buttonhole and Casing Measuring

Teacher
Check-Off



Calculate the length of each of the buttonholes below.

You may use a seam gauge, ruler or measuring tape, but not a calculator.

1. + = _____
 Diameter Depth Buttonhole Length
 $\frac{1}{2}$ " $\frac{1}{4}$ "

5. + = _____
 Diameter Depth Buttonhole Length
 $\frac{3}{8}$ " $\frac{1}{4}$ "

2. + = _____
 Diameter Depth Buttonhole Length
 $\frac{1}{4}$ " $\frac{1}{8}$ "

6. + = _____
 Diameter Depth Buttonhole Length
 $\frac{3}{8}$ " $\frac{1}{2}$ "

3. + = _____
 Diameter Depth Buttonhole Length
 $\frac{5}{8}$ " $\frac{1}{8}$ "

7. + = _____
 Diameter Depth Buttonhole Length
 $\frac{3}{4}$ " $\frac{1}{4}$ "

4. + = _____
 Diameter Depth Buttonhole Length
 $\frac{5}{8}$ " $\frac{1}{4}$ "

4. + = _____
 Diameter Depth Buttonhole Length
 $\frac{3}{4}$ " $\frac{3}{8}$ "

Calculate the width of each of the casings below:

You may use a seam gauge, ruler or measuring tape, but not a calculator.

1. + $\frac{1}{4}$ " + $\frac{1}{4}$ " = _____
 Elastic Width Allowance Seam Casing Width

5. + $\frac{1}{4}$ " + $\frac{1}{2}$ " = _____
 Elastic Width Allowance Seam Casing Width

2. + $\frac{1}{4}$ " + $\frac{1}{4}$ " = _____
 Elastic Width Allowance Seam Casing Width

6. + $\frac{1}{4}$ " + $\frac{1}{2}$ " = _____
 Elastic Width Allowance Seam Casing Width

3. + $\frac{1}{4}$ " + $\frac{1}{4}$ " = _____
 Elastic Width Allowance Seam Casing Width

7. + $\frac{1}{4}$ " + $\frac{1}{2}$ " = _____
 Elastic Width Allowance Seam Casing Width

4. + $\frac{1}{4}$ " + $\frac{1}{4}$ " = _____
 Elastic Width Allowance Seam Casing Width

8. + $\frac{1}{4}$ " + $\frac{1}{2}$ " = _____
 Elastic Width Allowance Seam Casing Width

3. Pattern Drafting

Teacher
Check-Off

Use the space below to sketch out your monster doll. Your design must include:

- An Outward Curve
- An Inward Curve
- Enough Space for a Square/Rectangular Patch Pocket with Button/Buttonhole
- Areas to Incorporate Felt and Fusibles (Eyes, Mouth, Mustache, etc.)

FRONT	BACK

Teacher
Check-Off

Pattern Creation

After your sketch has been approved, use the paper provided by your teacher to create the pattern pieces you will use for your Monster Doll. Don't forget to account for seam allowances. It is better to make your doll and all of the pieces too big, rather than too small.

Ask your teacher if you need any help.

4. Working with Felt and Fusibles

Felt is a non-woven fabric. It comes in a variety of thicknesses, will not unravel and can be used for a variety of decoration.

Interfacing is another non-woven fabric used to strengthen and stabilize other fabrics. Most have a heat-activated fusible side that allows you to “glue” the interfacing right to the fabric.

Fusible Adhesive is what we will be using to attach the felt to your monster doll. It is a double-sided heat activated fusible adhesive that is great for “gluing” two pieces of fabric together. Some popular brands of this adhesive are Heat N’ Bond, Wonder Under, ThermoWeb and Steam A Seam. It has a paper backing on one side that you peel away after ironing it to one side of your fabric.

Follow the procedure below for attaching the fusible adhesive to your felt:

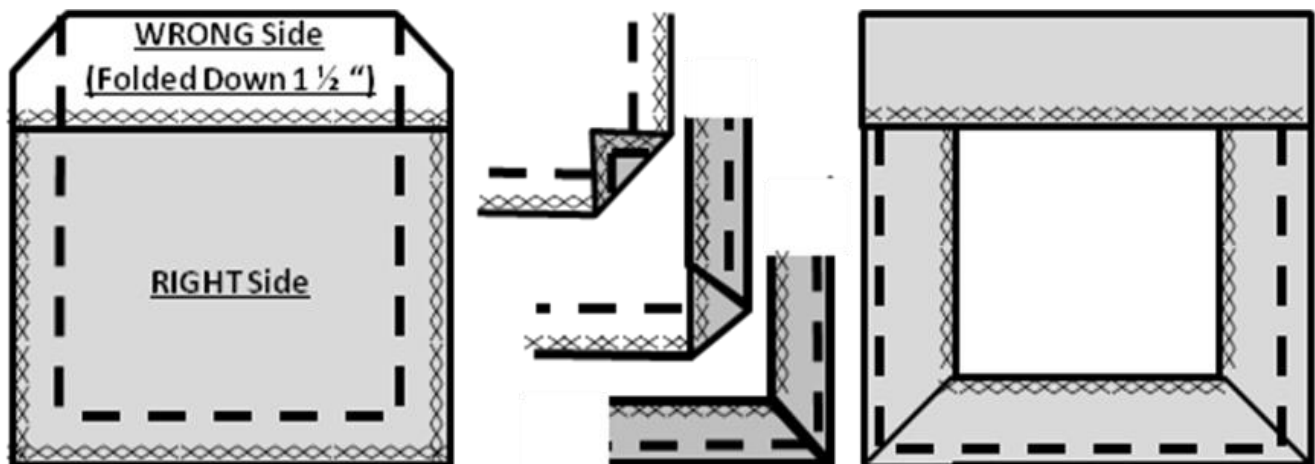
1. Choose the color and the size of the felt you will need for your Monster Doll pattern pieces. The felt and adhesive will need to be slightly larger than the actual pieces themselves. You will be tracing the pattern pieces onto the paper backing and cutting them out AFTER it has been fused to the felt.
2. Turn the iron down to low. Place the fusible side of the adhesive touching the felt. Iron over the paper backing to attach the adhesive to the felt.
3. Wait a few minutes for the felt to cool down.
4. Trace the pattern pieces onto the paper side of the adhesive. Remember, the direction you trace your pattern pieces will be “flipped” when you remove the paper backing and attach the felt to your Monster Doll. *Pay close attention to this step.*
5. Cut out your pattern pieces and then carefully remove the paper backing off of each piece. You should see a light layer of adhesive on the wrong side of the felt.
6. Position the felt pattern pieces on your Monster Doll with the adhesive side touching the right side of your fabric and iron in place. Don’t place your felt pieces too close to any edge of your Monster Doll. Don’t forget to account for the seam allowance that you will use to sew your monster doll together.
7. Once your felt pieces have been fused to your Monster Doll, you will need to also sew them into place. You can sew a straight stitch 1/8" from the edge around the pieces, or use a zigzag stitch along the edge of each piece. Be sure to trim your threads.

5. Patch Pocket

Determine how big you would like your patch pocket. Your pocket will need to be square or rectangular so that you can practice making a mitered corner. One edge of your pocket measurement will need to be 1 1/2" inches larger than the other side. For example, the fabric for your pocket might measure 4" x 5 1/2". This will give you a finished pocket of about 3" x 3".

To Construct the Patch Pocket:

1. Serge around each edge of the patch pocket fabric. Try not to cut too much off as you serge. Press flat if needed.
2. Using a seam gauge, press the taller edge of your pocket down 1 1/2" toward the RIGHT side of the fabric. (Right sides should be touching each other.)
3. Sew a straight seam around the 3 unfolded sides at 5/8", pivoting at each corner and backstitching at the beginning and end. You will be sewing over the folded edge.
4. Clip the corners on the folded edge, being careful not to cut through the stitching. Turn out the top folded edge to the right side and poke out the corners until they are sharp and square. This will also fold under the side seam allowances of the pocket. Press the sides down as they naturally fold to the wrong side of the pocket. Fold the bottom up as well to create a crease along the bottom.
5. To make the mitered corners, unfold the bottom and sides of the pocket. Fold the bottom corners of the pocket to the WRONG side, diagonally at the pivot point, about 1 1/4" in from each edge. Press these in place.
6. Fold the side seam allowances toward the wrong side of the pocket again and press in place. Finally, fold the bottom edge of the pocket up toward the wrong side to complete the mitered corner. Press in place. Make sure that the stitching is pressed toward the back of the pocket so that they cannot be seen on the right side.
7. From the wrong side of the pocket, sew the folded top edge of the pocket down at 1/4" from the serged edge.
8. Choose a button from the button bin. Larger buttons are easier to work with. Measure and sew the buttonhole using the buttonhole formula on the top edge of the patch pocket. It will be easier to do it now before you sew it onto the Monster Doll. *See the next page for instructions on how to measure and sew the buttonhole.*
9. After the buttonhole is made, position the pocket where you want it on the Monster Doll, then pin in place.
10. Sew the sides and bottom of the patch pocket, pivoting at the corners, at 1/8" from the edge of the pocket. Be sure to backstitch well at the beginning and end. Be sure to trip any threads.
11. After the pocket is in place, sew the button to the Monster Doll centered with the buttonhole. *See the next page for instructions on how to sew on the button.*



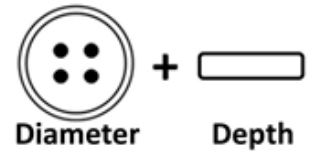
6. Buttons and Buttonholes

Follow the procedure below to sew a buttonhole and button to your Monster Doll:

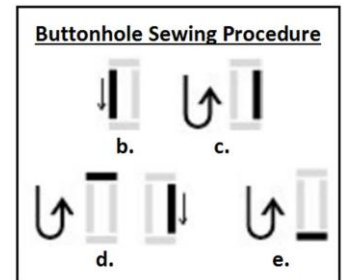
Sewing the Buttonhole:

- Using the buttonhole formula, measure and mark one buttonhole in the center of the top folded edge of the patch pocket BEFORE it is sewn onto your Monster Doll. Remember the buttonhole formula is:
Button Diameter + Button Depth
- Change your sewing machine presser foot to a #3 buttonhole foot.
- Select the buttonhole stitch (Number 11) on your sewing machine. It will automatically change all of the settings needed to complete the buttonhole.
- Follow the steps below to sew the buttonhole:
 - Align the #3 presser foot so that the needle starts at the top of the buttonhole marking. The needle should enter the fabric right where the vertical and horizontal lines meet.
 - Slowly begin sewing. The machine will automatically begin sewing a very tight zigzag stitch down the left side of the buttonhole marking. Stop sewing when you reach the bottom of the buttonhole marking.
 - Hold in the backstitch button and begin sewing again. Keep the backstitch button pressed in only until the machine begins sewing a straight stitch, backwards, back up to the top of the buttonhole marking. Then, let go of the backstitch button, but continue sewing. Stop sewing when you reach to top of the marking.
 - Hold in the backstitch button again and slowly begin sewing. The machine will automatically begin sewing the top bartack of the buttonhole. Once it begins sewing, let go of the backstitch button, but continue sewing. The machine will automatically begin sewing another tight zigzag stitch, this time down the right hand side of the button hole marking. Stop sewing when you reach the bottom of the buttonhole marking.
 - Hold in the backstitch button and begin sewing again. The machine will automatically begin sewing the bottom bartack of the buttonhole. Let go of the backstitch button when the machine begins sewing the bartack.
 - After the machine finishes the bottom bartack, it will stitch in place for 3 or 4 stitches as a backstitch to secure the threads. Once this has happened, the buttonhole is finished.
 - Lift the presser foot, remove the pocket and trim all of the threads. Carefully cut the buttonhole open, being careful not to cut through the stitching.
- Once your buttonhole is sewn and cut open, position the pocket where you want it on the Monster Doll, and then sew in place.

Buttonhole Formula

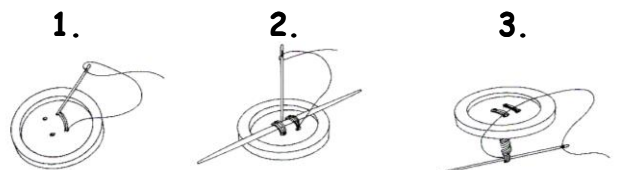


Buttonhole Stitch Selector



Sewing On the Button:

- After your pocket is sewn to your Monster Doll, you will sew your button centered with the buttonhole on the pocket. You will need thread, a hand sewing needle and a toothpick.
- Fold a very long piece of thread in half. Thread the folded end of the thread through the hand needle and fold the thread in half again. Tie a not at the end. (You should have a group of 4 threads tied together.)
- Stick the needle through the center of the buttonhole and all the way through the Monster Doll fabric. Pull the thread all the way to the back so that the knot rests up against the fabric.
- Bring the needle back up from the wrong side of the fabric next to the knot. Slide the button onto the needle through one of the holes on the button. Place the toothpick across the button before you stick the needle down through the next hole. This will allow you to sew a shank underneath your button.
- Continue sewing the button to the Monster Doll using the toothpick method (See Picture).
- After you have sewn through the holes on the button enough times for the button to be secure, remove the toothpick, settle the threads and stick the needle through one of the holes on the button, but NOT through the fabric. Pull the needle between the button and the fabric.
- Wrap the thread tightly three times around the threads under the button. This will tighten the threads and make a shank under the button. The shank will provide space which will allow the buttonhole to lie flat under the button.
- Tie a knot to secure the threads, stick the needle through the fabric of the Monster Doll and pull the thread all the way through to the wrong side. Cut the thread with a little bit of a thread tail left over.



7. Pivoting and Backstitching

Pivoting allows you to turn corners sharply while sewing, or sew around tight curves, without having to remove the fabric. To pivot, follow the procedure below:

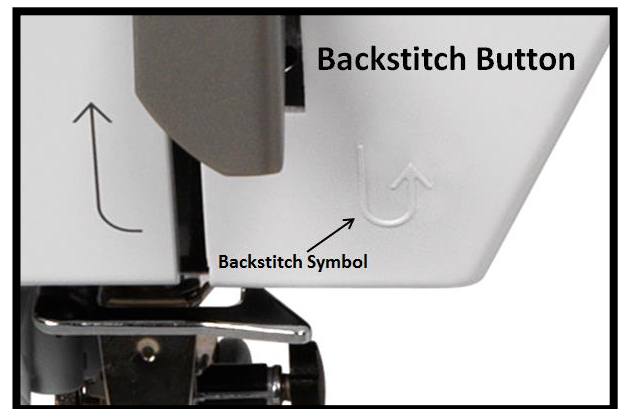
1. Select the *Needle Down* position on the selector button. When the down position is engaged, the needle will remain down in the fabric whenever you stop sewing.
2. Begin sewing. When you come to a corner or a tight turn where you need to pivot, stop sewing. The needle should remain in the fabric. Lift the presser foot, turn or pivot the fabric in the direction you will be sewing.
3. Lower the presser foot and begin sewing again.
4. If you are pivoting around tight curves, you may need to pivot several times. Don't forget to backstitch.

Needle Up/Down Selector



Backstitching secures the ends of the thread in the fabric so the seam will not come undone. To backstitch, follow the procedure below:

1. Place the edge of the fabric in the sewing machine. You want to position the fabric so the needle will go through the fabric about 1/4" to 1/2" in from the edge. If the needle starts too close to the edge of the fabric, it may push it under the stitch plate.
2. Sew forward 3 or 4 stitches and then stop sewing.
3. Press in the backstitch button, located on the front of the sewing machine, and keep it pressed in to backstitch. Begin sewing. The machine will stitch backwards as long as the backstitch button is pressed in.
4. Once you reach the edge of the fabric, let go of the backstitch button and sew forward again.
5. You will usually backstitch at the beginning and the end of a seam.



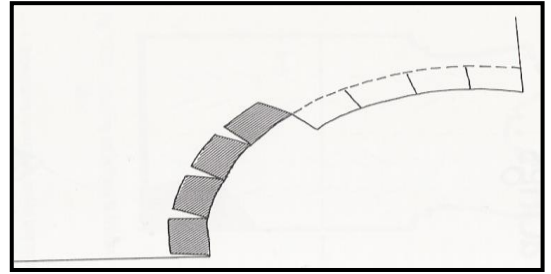
Sew the Monster Doll Together

Place the pieces of your Monster Doll together with right sides touching. Sew around the Monster Doll using a 1/4" seam allowance, backstitching and pivoting as needed. Don't forget to leave an opening somewhere on your Monster Doll so that you can turn it right side out.

8. Clipping and Notching

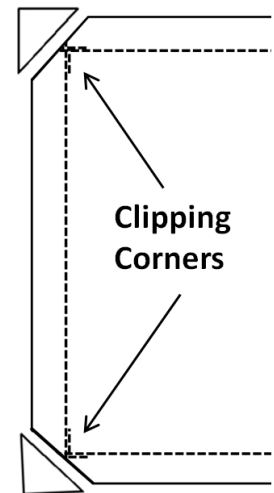
Clipping allows inwardly curved seams to stretch, bend and lay flat when turned to the right side. Follow the procedure below to clip inwardly curved seams:

1. After the seam has been sewn around the curved area, carefully cut small clips along the curve of the seam allowance. You will just be making straight cuts into the seam allowance. You will not be removing any fabric. Be careful to NOT cut through the stitching line itself.



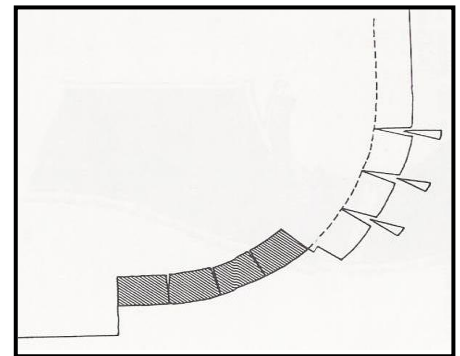
Clipping Corners is another technique that reduces bulk on square corners. Follow the procedure below to clip corners:

1. For more stability, it is best to clip corners that have been reinforced with backstitching. Corners where you have pivoted are weaker and could poke through when turned to the right side.
2. Cut a triangle shaped wedge away from the square corner. Get close to the stitching, but do not cut through the stitching.



Notching reduces the bulk of outwardly curved seams so they lay flat when turned to the right side. Follow the procedure below to notch outwardly curved seams:

1. After the seam has been sewn around the curved area, carefully notch out small pieces of the fabric in the seam allowance. You will be removing small triangle like pieces along the curve of the seam. Be careful to NOT cut through the stitching line itself.



Clipping and Notching The Monster Doll

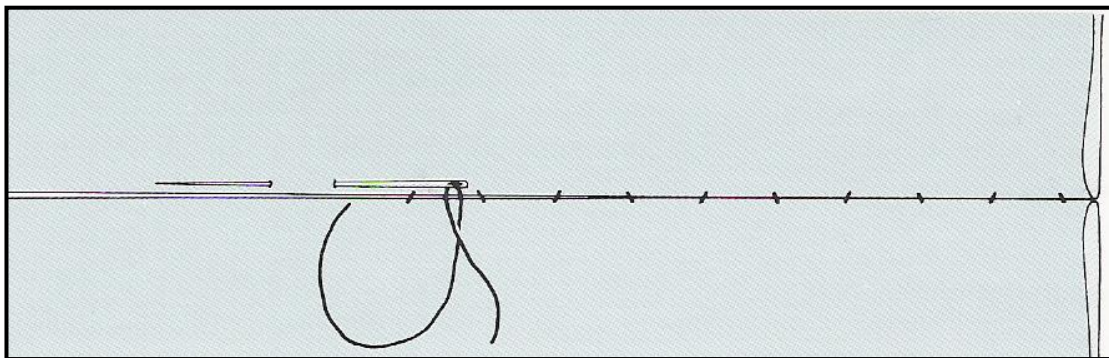
Clip and Notch the curved areas on your Monster Doll. Be careful not to cut through the stitching line itself. Clip any square corners on your Monster Doll as well.

Once this step is completed, turn the Monster Doll right sides out and press. Then, stuff the Monster Doll with fiberfill. Don't stuff it too full or it will be difficult to slipstitch it shut.

9. Slipstitching

A Slipstitch, sometimes known as an Invisible Stitch or Blind Stitch, is a hand sewing technique that allows you to close open seams so that it looks like it was sewn on a machine. The thread is “invisible” or cannot be seen on the right side of the project. Follow the procedure below to sew a slipstitch:

1. Thread a hand needle with one strand of thread and tie the two ends together.
2. Place the needle behind the last stitch you made on the sewing machine, from the inside. Pull the needle up through the seam allowance so that the knot will stay inside the pillow.
3. If you are right-handed, you will sew from right to left across the seam. If you are left-handed, you will sew from left to right across the seam.
4. Pinch the folded edges of the seam together. Slip the needle, down and up, only through the top fold about 1/4” away from where you started. Pull the thread all the way through.
5. Then, slip the needle, down and up, only through the bottom fold about 1/4" away from where you left off.
6. Repeat steps 4 and 5 all the way across the opening, going back and forth between the top and bottom folds.
7. When you reach the end of the opening, slip the needle under the last stitch you did on the sewing machine. Pull the thread through until a small loop of thread remains.
8. Stick your needle through the loop and then pull tight to create a knot. Stick the needle down through the seam allowance into the Monster Doll and pull it through the side of the doll. Cut the thread close to the Monster Doll. This will leave a hidden thread tail that will prevent the knot from coming undone.



Name: _____ Class: _____

Monster Doll

Grading Rubric

Grade yourself on the skills listed below. (0 being the lowest, and 5 being the highest.) Once you have graded yourself in each area, pin your grading sheet to your project and turn it in to be graded.

***Turn in your Skills Packet along with this grading sheet.**

	<u>Requirements</u>	<u>Student Grade</u>	<u>Teacher Grade</u>
1.	<u>Measuring and Seam Allowances</u> Examples and questions answered correctly.	0 1 2 3 4 5	0 1 2 3 4 5
2.	<u>Buttonhole and Casing Measuring</u> Examples and questions answered correctly.	0 1 2 3 4 5	0 1 2 3 4 5
3.	<u>Pattern Drafting and Creation</u> Pattern was sketched out and approved by teacher. Seam allowances were accounted for in pattern creation.	0 1 2 3 4 5	0 1 2 3 4 5
4.	<u>Working with Felt and Fusibles</u> Felt pieces are used and placed appropriately on Monster Doll. The fusible adhesive (Heat N' Bond) was used correctly to attach felt to Monster Doll. Each felt piece has been sewn to the Monster Doll using either a 1/8" seam allowance or a zigzag stitch.	0 1 2 3 4 5	0 1 2 3 4 5
5.	<u>Patch Pocket</u> Patch pocket is an appropriate size for the Monster Doll. The pocket is square or rectangular and has mitered corners that have been pressed correctly. The top edge of the pocket flap has been sewn down using a 1/8" seam allowance and the buttonhole is in an appropriate place. The top corners of the pocket are backstitched and secured in place. The pocket is sewn to the doll using a 1/8" seam allowance.	0 1 2 3 4 5	0 1 2 3 4 5
6.	<u>Buttons and Buttonholes</u> There is at least one buttonhole on the patch pocket. It is sewn correctly and there are no loose threads. The button has been sewn to the Monster Doll with a thread shank using the toothpick method. It is secure, centered with the buttonhole and all threads have been trimmed.	0 1 2 3 4 5	0 1 2 3 4 5
7.	<u>Pivoting and Backstitching</u> Where appropriate, proper pivoting and backstitching have been used while constructing the Monster Doll.	0 1 2 3 4 5	0 1 2 3 4 5
8.	<u>Clipping and Notching</u> All outward curved areas have been notched and all inward curved areas have been clipped appropriately. Any square corners have had the seam allowances clipped. Curved and pointed seams lie flat and smooth with no bunching or stretching.	0 1 2 3 4 5	0 1 2 3 4 5
9.	<u>Slipstitching</u> Slipstitched areas are stitched correctly. Thread is hidden in the seam. Stitches are an appropriate size in length to secure the seam. There are no loose threads.	0 1 2 3 4 5	0 1 2 3 4 5
10.	<u>Neatness/Organization</u> (Threads Clipped, Pressed, Instructions Followed, Backstitching, etc.)	0 1 2 3 4 5	0 1 2 3 4 5
	TOTAL:	_____ / 50	_____ / 50

Teacher Comments:

ABOVE MASTERY	MASTERY	NEAR MASTERY	BELOW MASTERY	INSUFFICIENT EVIDENCE
---------------	---------	--------------	---------------	-----------------------

5	4	3	2	0
50-41pts	40-31pts	30-16pts	15-6pts	5pts